

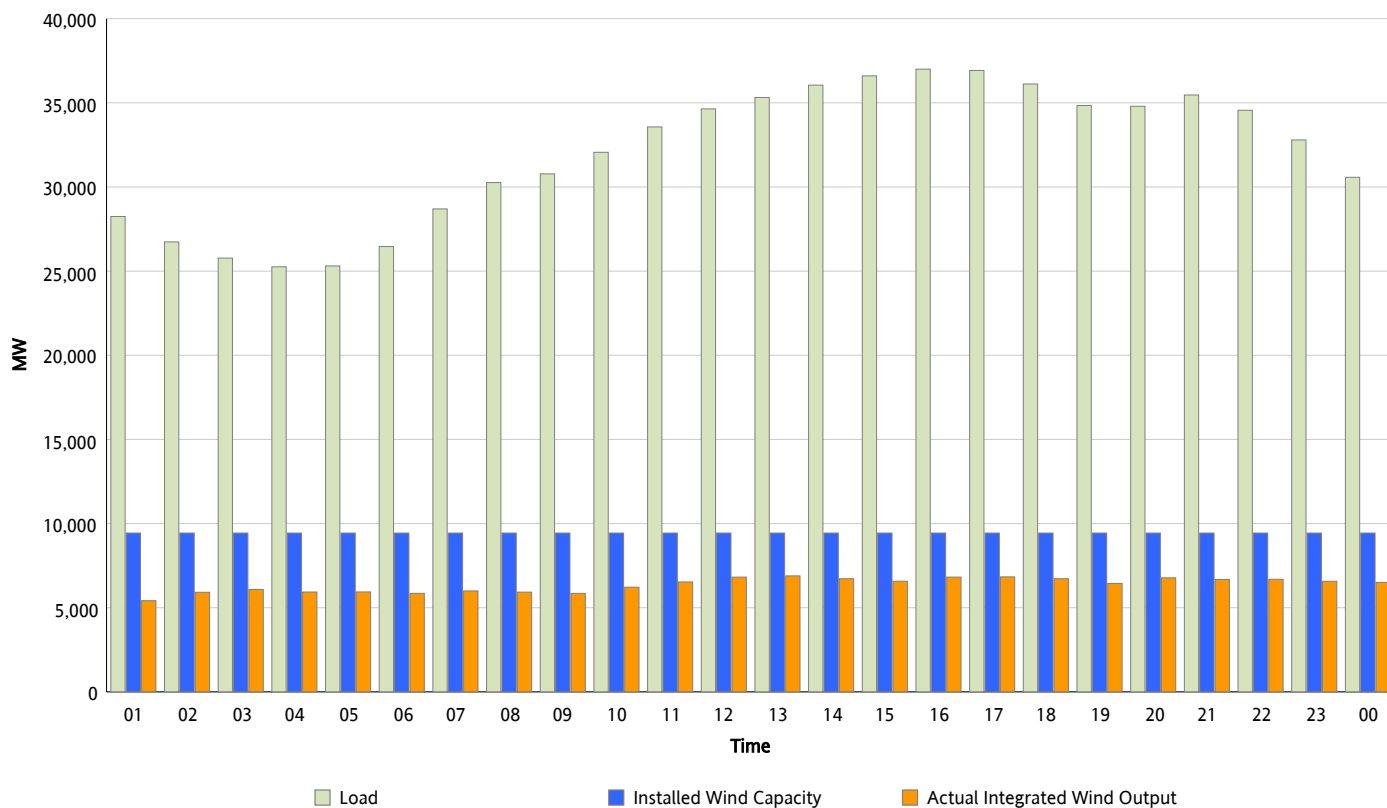


ERCOT Grid Operations

Wind Integration Report : 03/16/2012

Peak Load	37,003 MW
Load Peak Hour (HE)	16
Wind Over Peak	6,821 MW
Wind Record 03/07/12	7,599 MW
Max Wind Value*	7,006 MW
Wind Peak Time	12:10
Wind Integration %	19.97 %

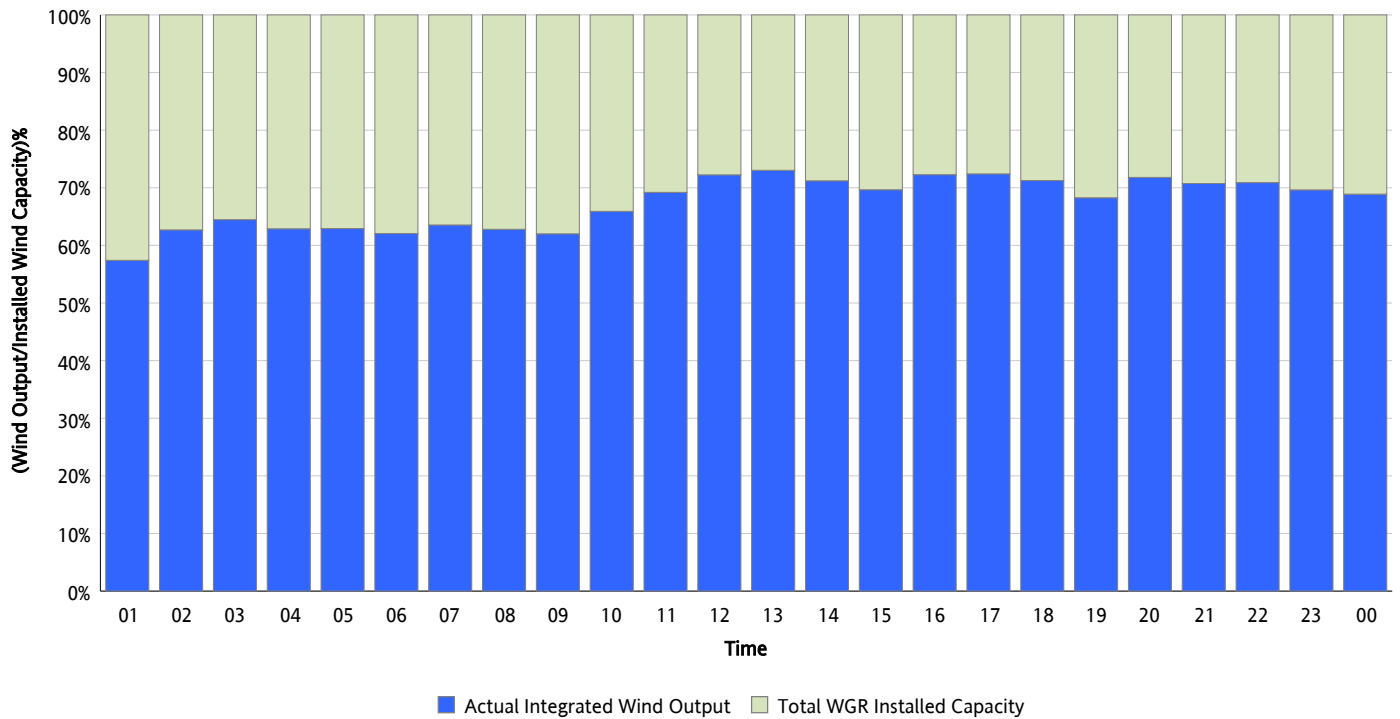
Hourly Average Actual Load vs. Actual Wind Output
03/16/2012



** Wind Record and Wind Max represent instantaneous values and the rest of the values are integrated over the hour*

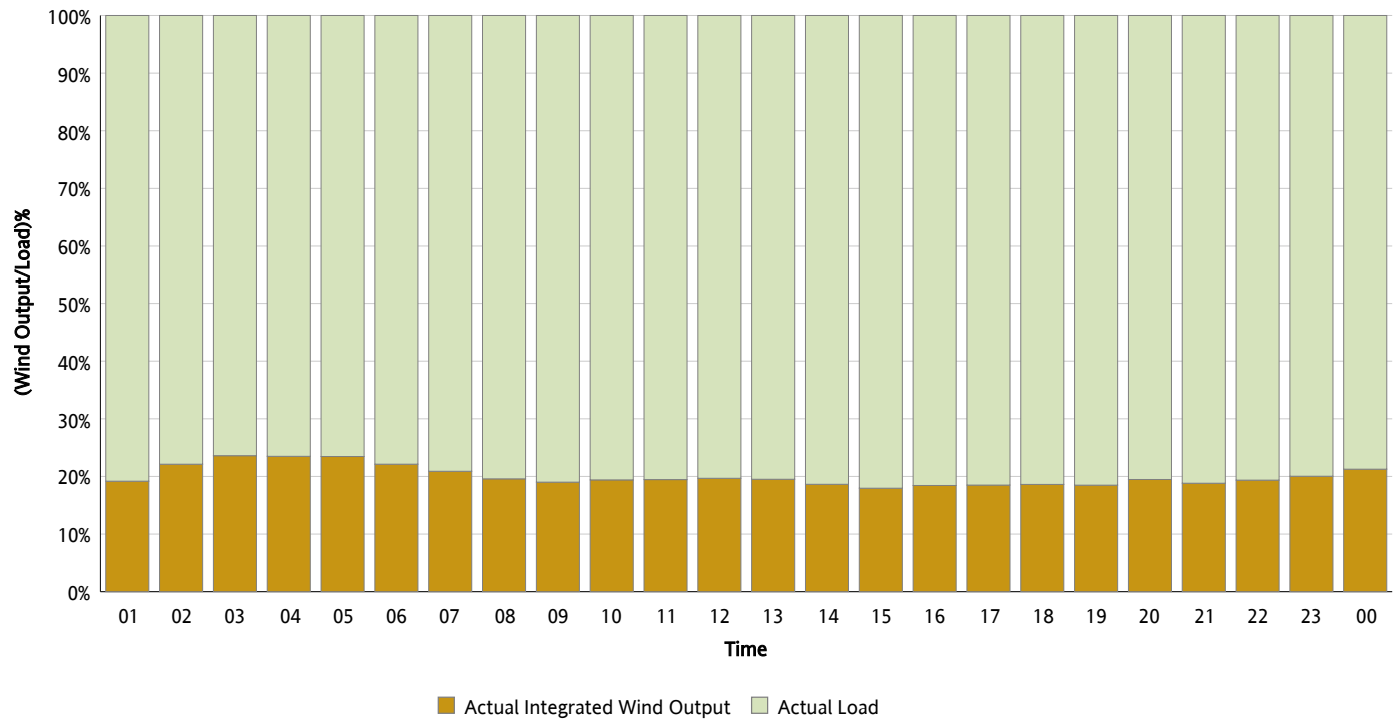
Actual Wind Output as a Percentage of the Total Installed Wind Capacity

03/16/2012



Actual Wind Output as a Percentage of the ERCOT Load

03/16/2012



ERCOT Load vs. Actual Wind Output

03/09/2012 - 03/16/2012

